

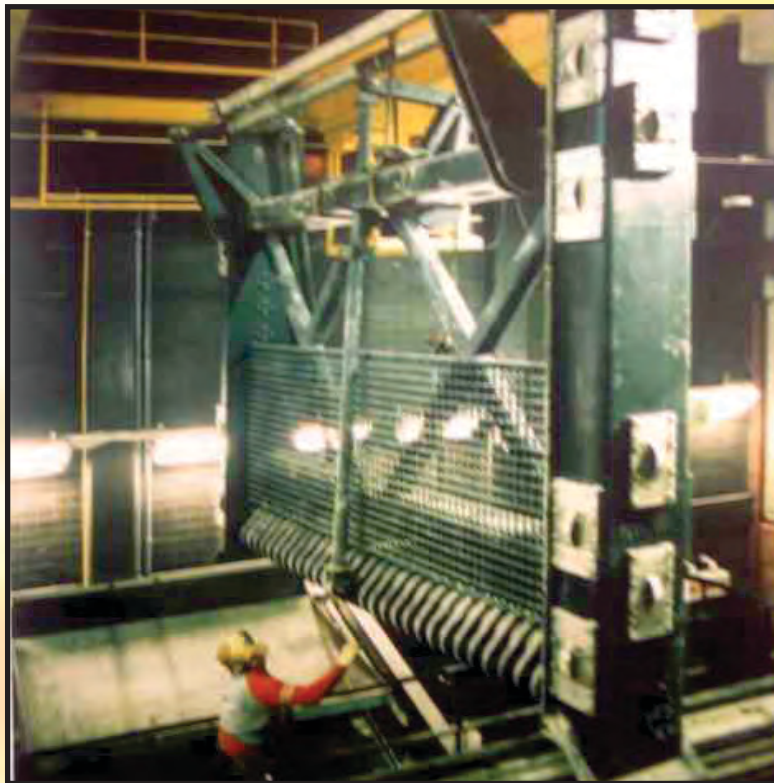
www.fairfieldservice.com

FAIRFIELD SERVICE COMPANY

Providing excellence in Service, Product, and Value in our efforts to support the Water, Wastewater, and Material Conveyance industries since 1978.

THE CAF

CABLE OPERATED BAR SCREEN



Reliable and economical solid separation with well-known deep screening technology

- ▶ Highly efficient
- ▶ For deep screening application
- ▶ For high screening loads
- ▶ High reliability
- ▶ Low maintenance

Water & Wastewater Treatment Equipment



www.fairfieldservice.com

The “CAF” bar screen is designed to protect processing equipment by removing oversize debris from the sewage immediately upon its arrival at the pumping station or treatment plant.

The rake that cleans the screen is a cable operated, reciprocating design that descends on the upstream side of the bar screen, engages the bar screen at channel floor level, and ascends on the upstream side of the bar screen.

The “CAF” consist of:

► **The Screen Rack**

The screen racks spans the full width of the channel and extend above maximum depth where it is bolted to the dead plate.

► **The Cleaning Rack Frame**

The cleaning rake frame is constructed of steel and guided by the guided blocks traveling in steel vertical channels extending from the floor of the channel to the machinery platform. The rake is raised and lowered by cables attached to steel operating bars on the rake providing cable length adjustment without removing the cable from the winding drums.

► **Cable Operating Mechanism**

The cable operating machinery consists of grooved steel winding drum mounted on a shaft having anti-friction roller bearings. For a differential cable movement jaw clutch assembly is provided.

► **Hydraulic Retarding Assembly**

The hydraulic brake mechanism holds the rake in a disengaged position while in the lowering or descending mode.

► **Rake Wiper**

The rake wiper is built of steel and actuated at the rake discharge position by ascending rake assembly.

► **Drive Assembly**

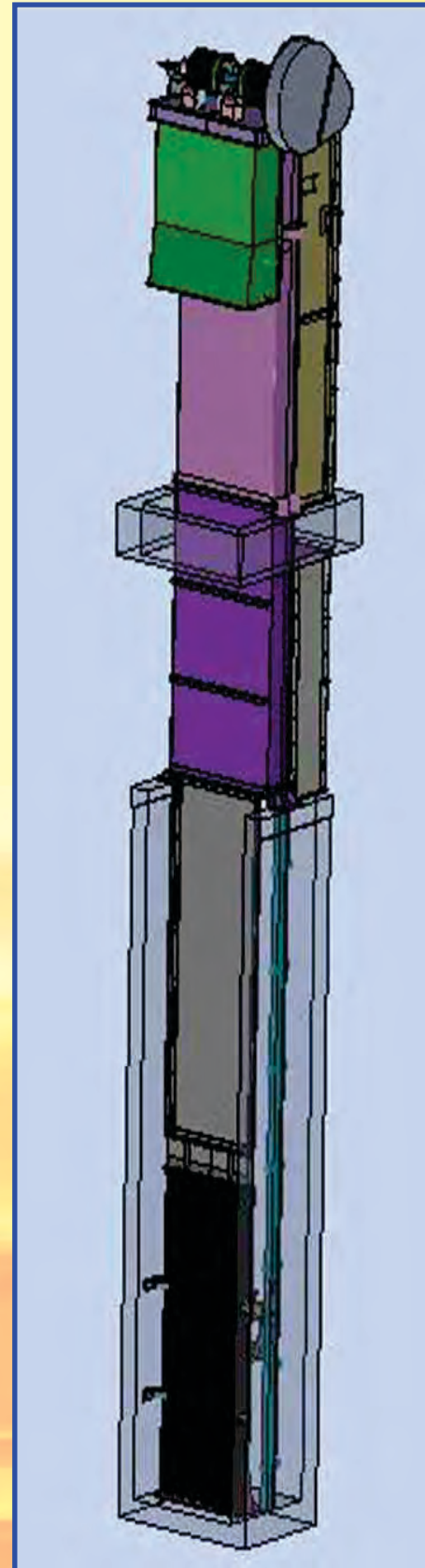
The drive shaft driving motor not less than 2 HP, with totally enclosed or explosion proof frame, directly connected by flexible coupling to a speed reduce unit having 1.5 service factor alloy steel gears enclosed in an oil-tight housing.

► **The Dead Plate**

The dead plate is built of steel, spans the full width of the screen, and extends from the top of the bar rack to the discharge position of the rake.

► **The Structural Machinery Platform**

The structural machinery platform can be furnished with steel checkered plate floor, steel pipe handrail and a steel access ladder from operating floors.





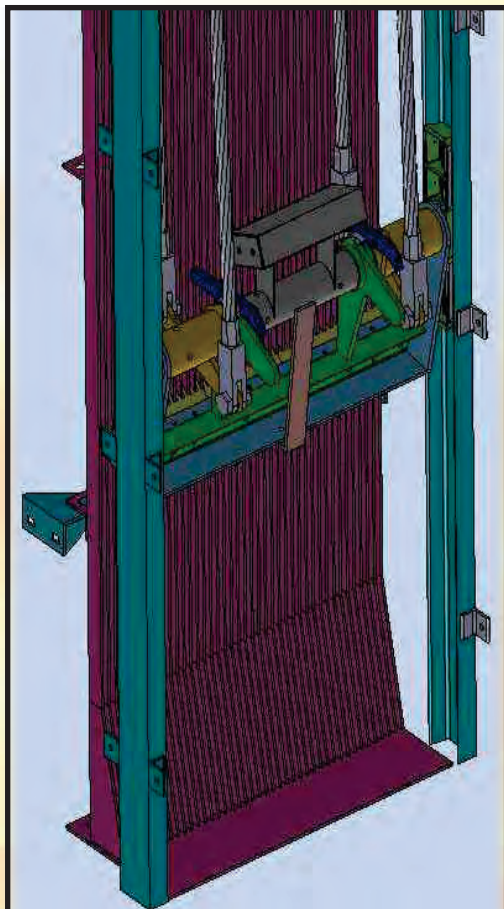
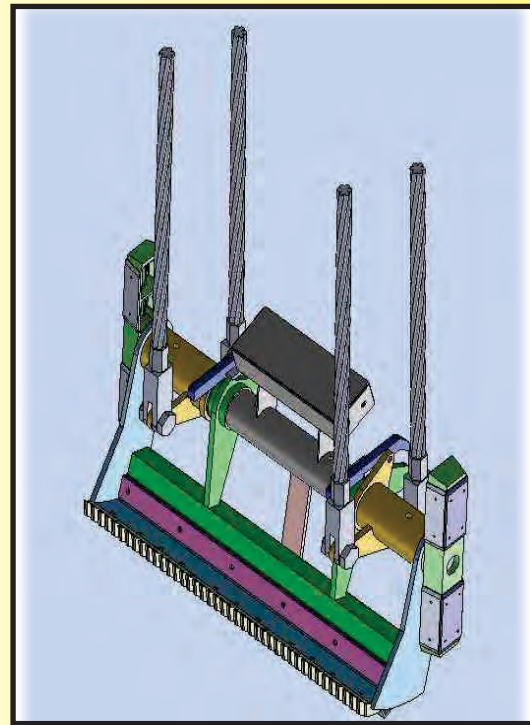
www.fairfieldservice.com

► Benefits

- Sturdy stainless steel design
- Application for more deep screening
- Less capital cost
- Low life cycle cost
- More efficient screening capture
- Reliable operation
- Low maintenance

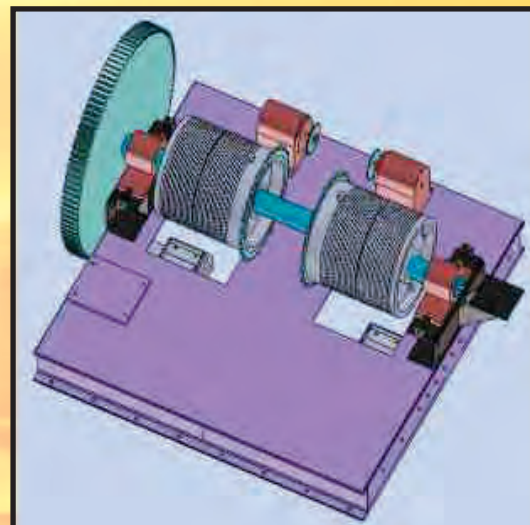
► Technical Data

- Maximum channel depth up to 250 feet
- Standard channel width from 3' to 9'
- Standard bar spacing are $\frac{3}{4}$ " to $1\frac{1}{2}$ "
- Other sizes available upon request
- Five years limited warranty



► Applications

- Municipal and industrial wastewater treatment plants
- Pump stations
- Surface water intake structures
- Combined sewer overflows



Cable operating machinery

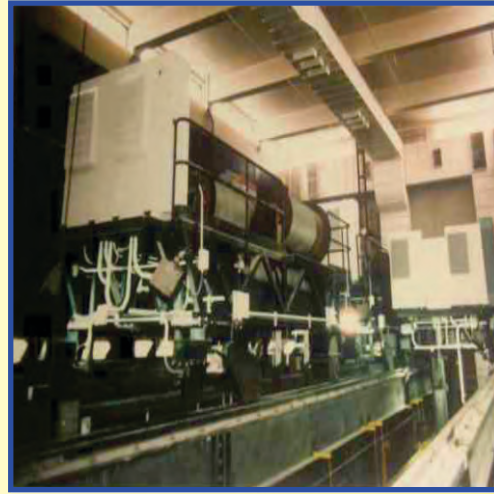


www.fairfieldservice.com

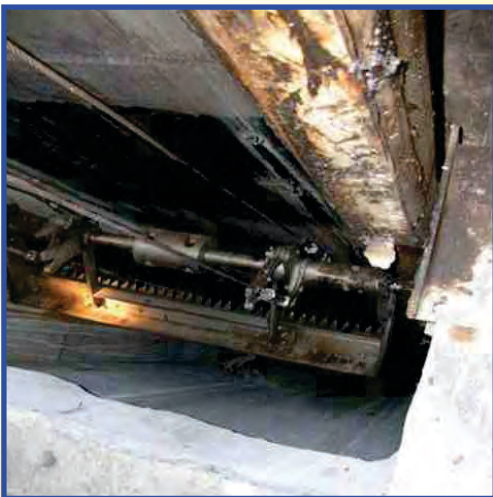
► A few examples from
our installations



CAF bar screen for
Philadelphia, PA



Drum Assembly of CAF bar screen for
Calumet Tunnel, Chicago, IL



Rake arm of CAF bar screen for
Philadelphia, PA



Control Panel

FAIRFIELD SERVICE COMPANY IS MBE CERTIFIED.

Plant

1401 Kentucky St.
Michigan City, IN 46360
Phone: 219-872-3000
Fax: 219-872-4327

www.fairfieldservice.com

Sales Office

Engineering, Design & Development

3007 Harding Highway East,
Box 2 North, Marion, OH 43302-8532
Phone: 740-387-3335
Fax : 740-387-4685

Water & Wastewater Treatment Equipment