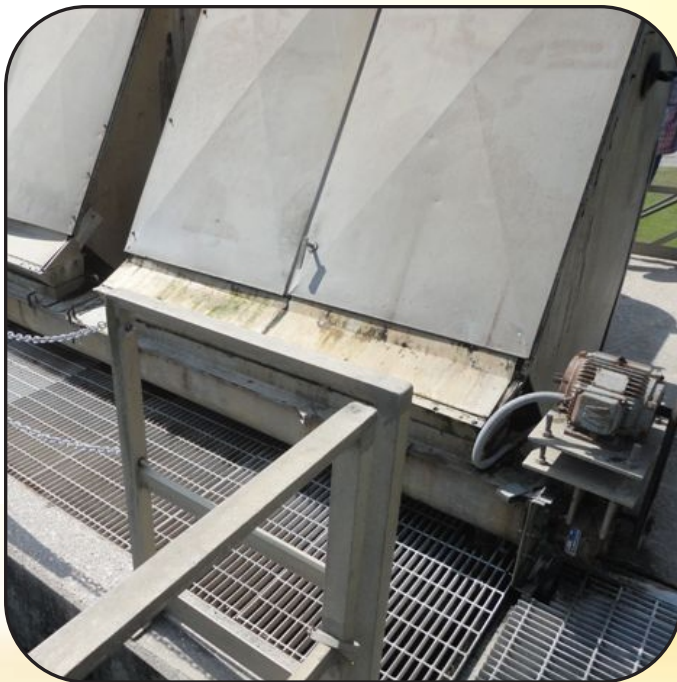


[www.fairfieldservice.com](http://www.fairfieldservice.com)

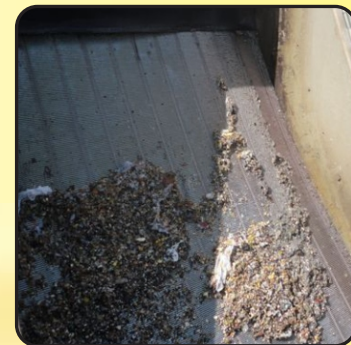
# FAIRFIELD SERVICE COMPANY

Providing quality equipment, excellent service and competitive pricing to the water, waste water, and material conveyance industry since 1978.



## Static Screen

### Liquid/Solid Separation



The Static Screen unit is a proven, reliable performer for liquid/solid separation in municipal and industrial applications, particularly for screening fibrous and non-greasy solids. There are no moving parts, motors, or complicated connections. The Static Screen is simple and economical to operate.

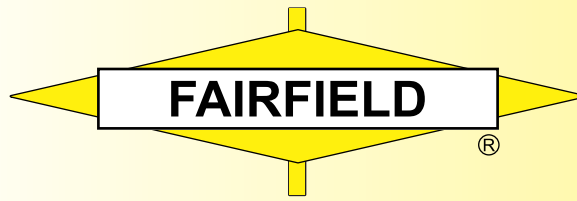
Although the Static Screen is one of the most basic it is designed with quality and custom features to meet site requirements. It is compact and provides high throughput.

There are headbox options, including deep flat and shallow tapered designs to accommodate solids loading. A swinging baffle across the weir directs the flow for the most efficient screen operation.

The Static Screen unit's unique bi-wave wedgewire screen panel, with double downward curves, increases the Coanda effect by rapidly stripping liquid from the influent as it hits the top of the screen panel. The rapid shearing maximizes solids capture and minimizes screen blinding.

Additional drainage occurs as the solids captured by the screen roll down the curved screen face. At the end of the screen panel is a drip lip that directs the drained liquid away from the solids and returns it to the filtrate chamber.

The Static Screen removes up to 90% of all floatable and 35% of suspended solids, including non-biodegradable particulate matter and can reduce BOD levels by up to 35%. The Static screening action enhances aeration and may increase dissolved oxygen levels by 2mg/liter or more.



www.fairfieldservice.com

## Standard Features

- Capacities from 150 - 1,400 gpm (34 m3/h - 320 m3/h)
- Screen openings as small as 0.25 mm
- 304 or 316 stainless steel screen panel
- Stainless steel or fiberglass body
- Minimum maintenance
- Optional TurboWash™ available
- Flow distribution baffle maximizes solids capture

## Options

- Doors and covers
- Discharge chute
- Custom-designed to optimize operating conditions
- Spray systems

### It provides primary treatment for Liquid/Solid Separation Applications

#### **Beverage Industry : -**

- Grain Mixtures Malt, Barley.
- Labels And Other Bottle Waste.

#### **Fish Industry : -**

- From Fish Flour To Waste.

#### **Refuse Disposal : -**

- Peat And Gardening Refuses.
- Biological And Industrial Refuses.

#### **Fruit And Vegetable Industry : -**

- Fruit Flesh.
- Peelings , Cores.
- Kernels, Fruit And Vegetable Waste.

#### **Waste-water Handling : -**

- Plants For Effluent Treatment And Urban And Industrial Water Screenings
- De-watered, Thickened Sludge.

#### **Paper Industry : -**

- Paper Pulp.
- Long Strips Of Paper.

#### **Catering : -**

- Leftovers And Waste Deriving From Hospitals , Refectories , Airports.

#### **Incineration Plant : -**

- Civil And Industrial Refuses , Ashes And Granular Materials.

#### **Meat Handling : -**

- Meat And Sausage Waste
- Waste-water Cleaning.

#### **Food Industry : -**

- Pastes, Creams , Preserves
- Residues Of Dry , Semi-solid And Viscous Production.

#### **Abattoirs : -**

- Entrails, Hair Or Fur Waste
- Bones, Hooves, Claws.

#### **Chemical Industry : -**

- Fertilizers , Plastic Materials
- Granular Materials And Powders.

## FAIRFIELD SERVICE COMPANY IS MBE CERTIFIED.

### **Plant**

1401 Kentucky St.  
Michigan City, IN 46360  
Phone: 219-872-3000  
Fax : 219-872-4327

### **Engineering, Design & Development**

3007 Harding Highway East,  
Box 2 North, Marion,  
OH 43302-8532

www.fairfieldservice.com

# Water & Wastewater Treatment Equipment